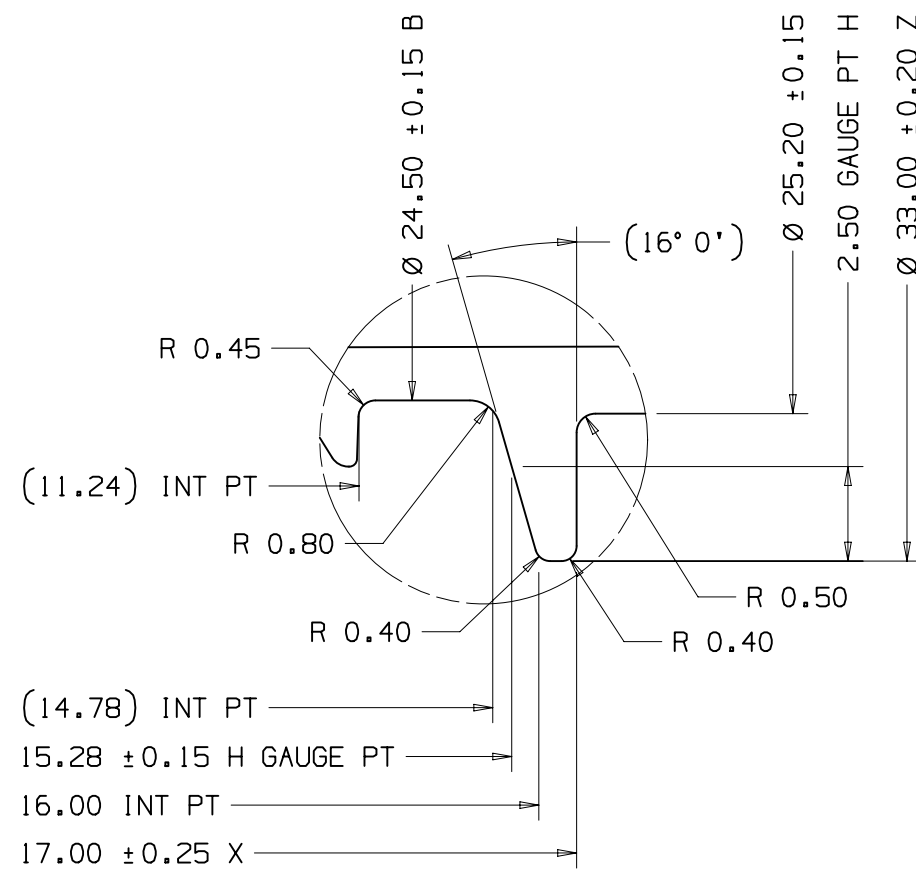
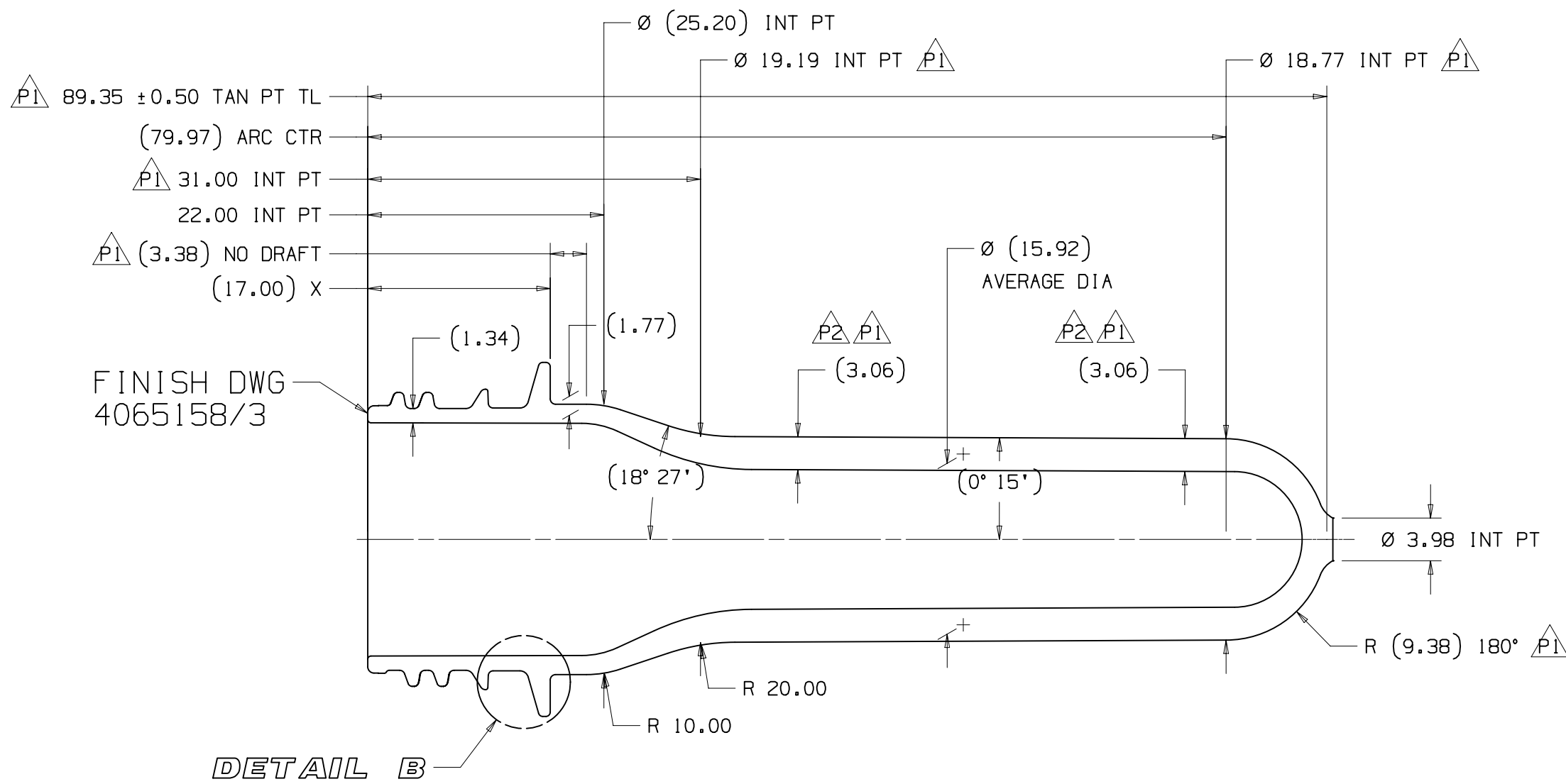
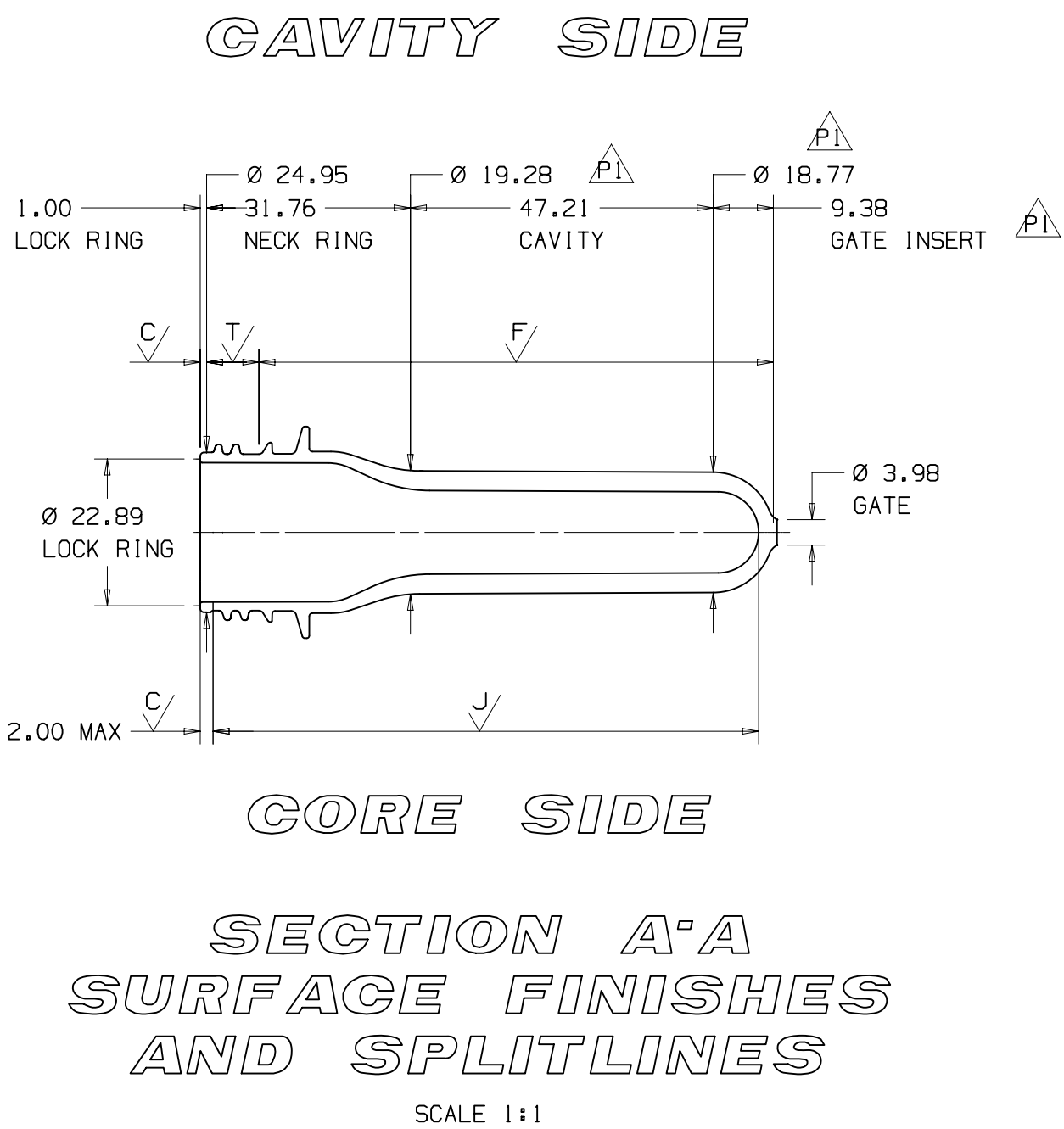


TOP VIEW
SCALE 2:1

ENGRAVING
VIEW
SIDE B
(NON-OPERATOR)
SCALE 2:1



PROJECT	XXXXXX	XX-XX-XX TO XX-XX-XX (SPARES INCLUDED)
MAIN PROJ.	XXXXXX	
PROJ. ENG.		ENGRAVING SEQUENCE
MOLDING SURFACE ENGRAVING DATA:		
POSITION: AS SHOWN ON MOLDING SURFACE		
FONT DETAILS:		
STYLE: ZURICH SHOWN POSITIVE ON PLASTIC		
SIZE: 1.50 HIGH X 0.10 DEEP		

MOLDING SURFACE FINISHES

✓	=	M-1 B120 VAPOURPHONE AND BUFF
✓	=	0.2 POLISH
✓	=	MACHINE AND B120 VAPOURPHONE
✓	=	0.3 GRIND OR HARD TURN

CUSTOMER APPROVAL	PLEASE PRINT NAME
	SIGNATURE
DATE	

HUSKY INJECTION MOLDING SYSTEMS LTD., OR ITS AFFILIATES (COLLECTIVELY "HUSKY") DO NOT WARRANT THE ACCURACY, ADEQUACY OR COMPLETENESS OF THIS DRAWING OR ITS CONTENTS INCLUDING DIMENSIONS AND TOLERANCES (THE "DRAWING") AND EXPRESSLY DISCLAIM LIABILITY FOR ANY ERRORS IN, OMISSIONS TO, OR RELIANCE ON THE DRAWING.

ALL IMPLIED, EXPRESSED, OR STATUTORY WARRANTIES AND REPRESENTATIONS OF ANY KIND WITH REGARD TO THE DRAWING ARE DISCLAIMED, INCLUDING BUT NOT LIMITED TO THE WARRANTIES OF (I) NON-INFRINGEMENT OF THIRD PARTY INTELLECTUAL PROPERTY RIGHTS BY THE DRAWING ALONE OR PRODUCTS PRODUCED FROM THE DRAWING, OR THE DRAWING OR PRODUCTS PRODUCED IN COMBINATION WITH ANOTHER DESIGN, DEVICE OR PROCESS, (II) TITLE, (III) MERCHANTABILITY, AND (IV) FITNESS FOR A PARTICULAR PURPOSE.

IN NO EVENT WILL HUSKY, ITS AGENTS OR EMPLOYEES, BE LIABLE FOR ANY DAMAGES, CLAIMS, ACTIONS, COSTS, JUDGMENTS, SUBORDINATION, LOSSES OR OTHER EXPENSES, INCLUDING LEGAL FEES AND EXPENSES, ARISING OUT OF OR IN ANY WAY CONNECTED WITH (I) THE USE OF OR INABILITY TO USE THE DRAWING OF ANY PARTY, (II) ANY ERROR, OMISSION, OR DEFECT IN THE DRAWING OR PRODUCTS PRODUCED FROM THE DRAWING, (III) ANY PERSONAL INJURY, DEATH, PROPERTY DAMAGE, OR OTHER DAMAGES CAUSED BY USE OF THE DRAWING OR PRODUCTS PRODUCED FROM THE DRAWING, OR (IV) ANY ALLEGATION THAT THE DRAWING PROVIDED HEREIN ALONE OR PRODUCTS PRODUCED BASED ON THE DRAWING, OR THE DRAWING OR PRODUCTS PRODUCED IN COMBINATION WITH ANOTHER DESIGN, DEVICE OR PROCESS, INFRINGES UPON ANY PATENTS, COPYRIGHTS, TRADEMARKS, TRADE DRESS, TRADE SECRET RIGHTS OR OTHER PROPRIETARY RIGHTS OF A THIRD PARTY.

CERTAIN DETAILS ON THESE DRAWINGS (SUCH AS, BUT NOT LIMITED TO, SPLIT LINES, SURFACE FINISHES, PART GEOMETRY AND TOLERANCES) ARE VALID FOR THE DEPICTED MOLD(S) CONFIGURATION(S) ONLY AND MAY BE SUBJECT TO CHANGE FOR OTHER MOLD(S) CONFIGURATION(S). FOR PROTOTYPE MOLDS, THESE CERTAIN DETAILS ON THE DRAWINGS ARE SUBJECT TO CHANGE WHEN CONVERTED TO PRODUCTION DRAWING.

HUSKY RESERVES THE RIGHT TO MODIFY THE DRAWINGS UP TO AND INCLUDING THE FINALIZATION OF THE PRODUCTION DRAWINGS.

DIMENSIONS SHOWN ON THE DRAWING ARE PLASTIC SIZES.

ALLOWABLE DEVIATIONS ON UNTOLERANCED DIMENSIONS DIN 18801/REHE 130.

FOR STACK COMPONENTS THAT ARE BEING REWORKED OR REUSED, THE DIMENSIONS ARE A RESULT OF EXISTING STEEL, AND THE TOLERANCES SHOWN ARE FOR REFERENCE ONLY.

PRODUCT DATA

ESTIMATED SHRINKAGE	HUSKY STANDARD
ESTIMATED PART WEIGHT	17.80 ± 0.20 gr (HUSKY EST)
ESTIMATED NECK WEIGHT	3.63 gr (HUSKY EST)
SPECIFIC GRAVITY	1.335
NEUTRAL AXIS HALF-LENGTH	76.23 mm
COMPONENT VOLUME	X.X l
ESTIMATED PART TOTAL AREA	11398 mm² (HUSKY EST)
REFERENCE DRAWING NO.	BODY: N/A THREAD: N/A
MATERIAL	PET

ASPECTS OF THE PREFORM DESIGN OR THE PREFORM DESIGN IN ITS ENTIRETY MAY BE SUBJECT TO PATENT-PENDING OR PATENT PROTECTION.		METRIC		HUSKY	
THIS DRAWING AND INFORMATION CONTAINED WITHIN IS CONFIDENTIAL AND/OR PROPRIETARY TO HUSKY INJECTION MOLDING SYSTEMS LTD. OR ONE OF ITS SUBSIDIARIES ("HUSKY") AND MAY NOT BE COPIED, DISCLOSED OR USED, IN WHOLE OR IN PART, WITHOUT THE PRIOR WRITTEN CONSENT OF HUSKY.		TITLE		Preform Plastic Size	
NO INTELLECTUAL PROPERTY RIGHTS ARE GRANTED INCLUDING ANY LICENSE IMPLIED OR OTHERWISE.		SCALE AS SHOWN		DRAWING	
ALL RIGHTS RESERVED. COPYRIGHT 2015 HUSKY.		SHEET 1 OF 1		REV	
		A1		P2	

REV	DATE	DESCRIPTION	NAME
P2		CORE SIDE GEOMETRY ADAPTED TO REACH 17.80G.	DRWN: CHKD:
P1		CAVITY AND CORE SIDE GEOMETRY CHANGED. SPLIT LINE POSITION CHANGED. NEW WEIGHT AS RESULT.	DRWN: CHKD:
P0		ORIGINAL ISSUE - DESIGNED BY: P.KLEES (NO-029265)	DRWN: CHKD: